

Viol. I. di Braccio & Violino II.

Musicalische
GESELLSCHAFTS-ERGETZUNG
(1673)

[SUITE N° 1 in b minor]

1. Sonata.

Adagio.

Esaias Reusner



5



10



14



18



22



26



30



34



38



42

45 **Adagio**

50



55

Repet: Trip:

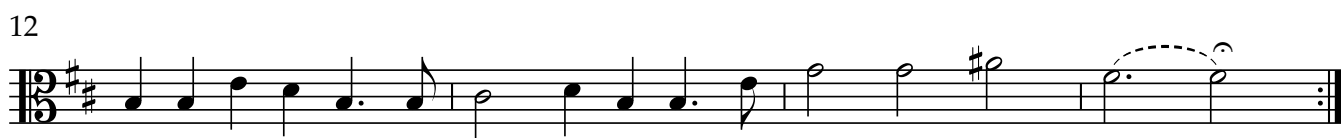
**2. Allemanda.**

5



14



3. Courant.**4. Sarabande.**

5. Gavotte.



5



9



6. Gigue.



9



15



22



30



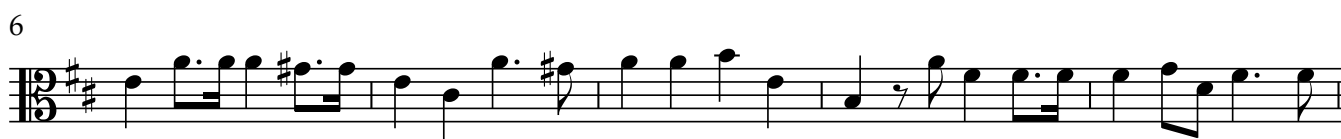
36



[SUITE N° 2 in D major]

7. Sonata.

Adagio



[illegible]

The musical notation shows the final measures of the piece. It begins with a treble clef, a key signature of one sharp (F#), and a 3/8 time signature. The melody consists of several eighth and quarter notes, ending with a half note. The word *piano* is written below the staff, indicating the dynamic. The piece concludes with a double bar line and repeat dots.

8. Allemanda.



9. Courant.



10. Sarabande.



7



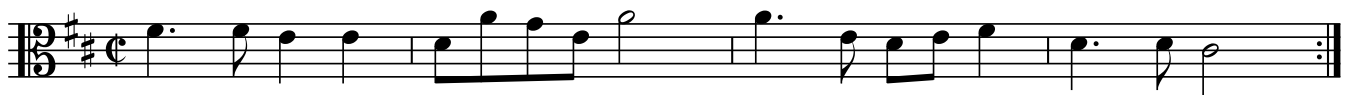
14



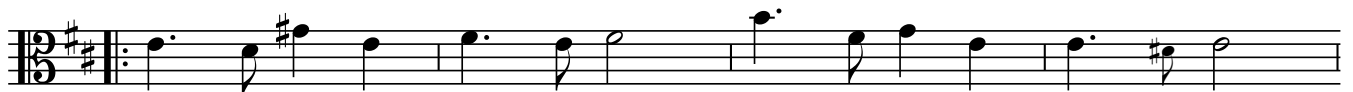
19



11. Gavotte.



5



9

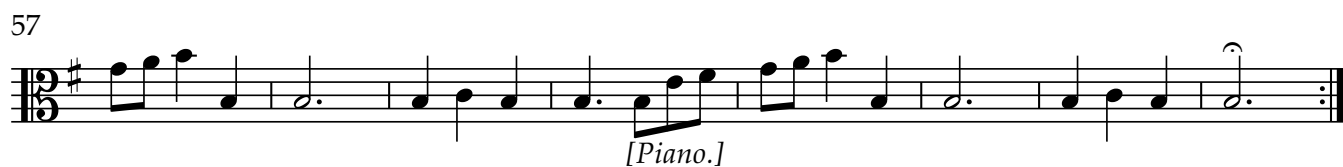


12. Gigue.



[SUITE N° 3 in e minor]

13. Sonata.



65 **Lente.**



73



81



88

Adagio.



95



100



14. Allemanda.



5



14



15. Courant.

4

7

11

14

16. Sarabande.

Musical notation for Example 6-10: A single staff in 3/8 time with a key signature of one sharp (F#). The melody consists of eighth notes and quarter notes.

7

12

17. Gigue.

17



8



16



25



32



18. Courant.



4

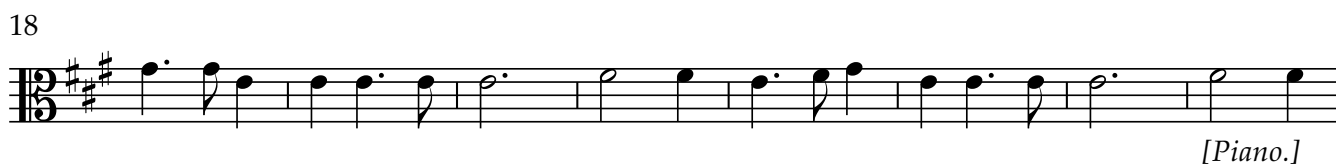


11



[SUITE N° 4 in A major]

19. Sonata.



43



46



49

Allegro. ()*

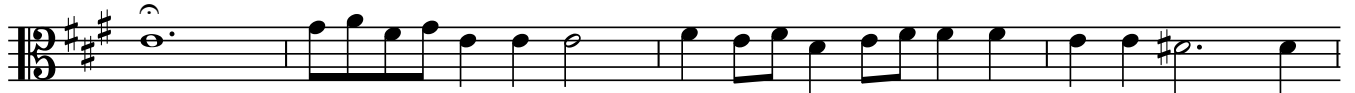
53

(Allegro. ?)

58



62



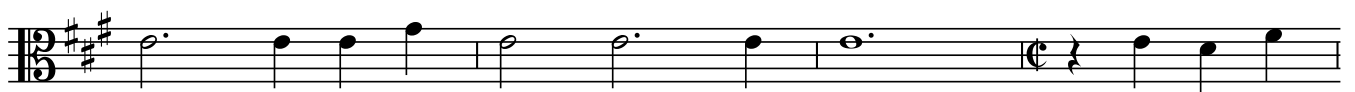
66

Adagio.*[Piano.]*

71

*Pian.*

76

*[Piano.]*

80



20. Allemanda.

5

9

13

18

Musical score for Allemanda, measures 1-18. The score is written for Violin I and Violin II in 3/8 time, key of D major (two sharps). The melody is characterized by eighth and sixteenth notes, with some rests and accidentals. Measure 18 ends with a repeat sign.

21. Courant.

4

7

13

16

Musical score for Courant, measures 1-16. The score is written for Violin I and Violin II in 3/8 time, key of D major (two sharps). The melody is characterized by eighth and sixteenth notes, with some rests and accidentals. Measure 16 ends with a repeat sign.

[Piano.]

22. Sarabande.



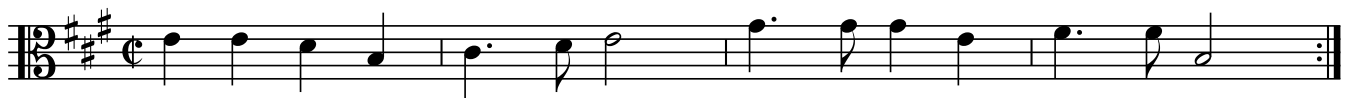
7



12



23. Gavotte.



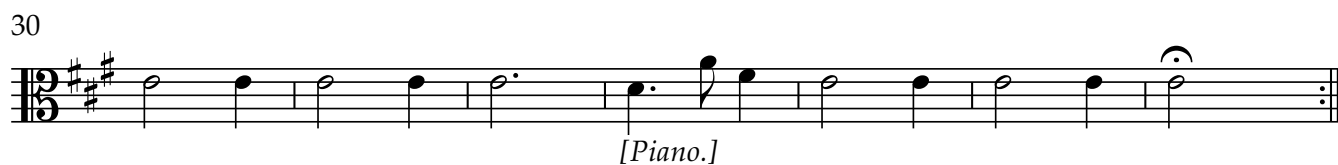
5



9



24. Gigue.



[SUITE N° 5 in C major]

25. Sonata.



41



46

Presto.

53



60



66

72 **Adagio.**
(Lente.)**26. Allemanda.**

5



13



27. Courant.



28. Sarabande.



29. Gavotte.

5

9

Musical score for Gavotte, measures 1-9. The score is written in 3/8 time and G major. It consists of three staves. The first staff contains measures 1-4, the second staff contains measures 5-8, and the third staff contains measure 9. The piece ends with a repeat sign and a double bar line.

30. Gigue.

9

17

25

33

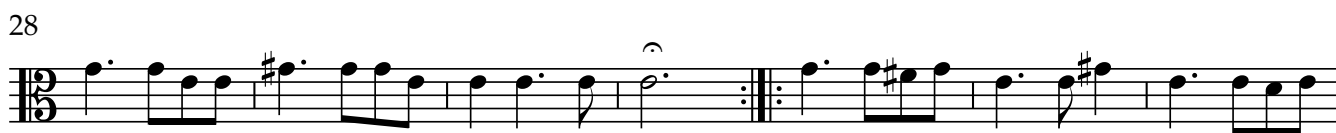
41

47

Musical score for Gigue, measures 1-47. The score is written in 3/8 time and G major. It consists of seven staves. The first staff contains measures 1-8, the second staff contains measures 9-16, the third staff contains measures 17-24, the fourth staff contains measures 25-32, the fifth staff contains measures 33-40, the sixth staff contains measures 41-46, and the seventh staff contains measure 47. The piece ends with a repeat sign and a double bar line.

[SUITE N° 6 in a minor]

31. Sonata.



42



49



56

Adagio.

61



66



70

**Allegro.
(Presto.)**

77



84



91

Adagio.

32. Allemanda.

5

9

14

18

Musical score for Allemanda, measures 1-18. The score is written for Violin I and Violin II in 3/8 time. The key signature has one sharp (F#). The melody is written on a single staff. Measures 1-18 are shown, with measure numbers 5, 9, 14, and 18 indicated at the start of their respective lines. The piece ends with a double bar line and repeat dots.

33. Courant.

4

8

12

Musical score for Courant, measures 1-12. The score is written for Violin I and Violin II in 3/8 time. The key signature has one sharp (F#). The melody is written on a single staff. Measures 1-12 are shown, with measure numbers 4, 8, and 12 indicated at the start of their respective lines. The piece ends with a double bar line and repeat dots.

34. Sarabande.



7



12



35. Gavotte.



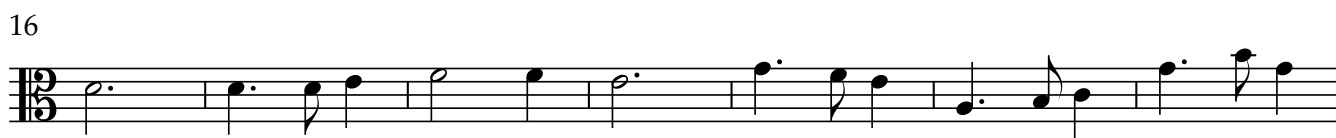
5



9



36. Gigue.



[SUITE N° 7 in F major]

37. Sonata.



42 **Adagio.**

46



50

54 **Allegro.**

60



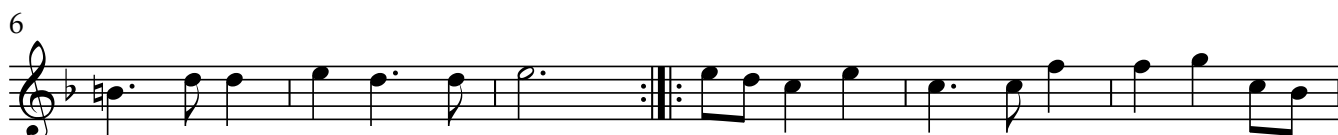
67

73 **Lente.****38. Allemanda.**

39. Courant.



40. Sarabande.



41. Gavotte.

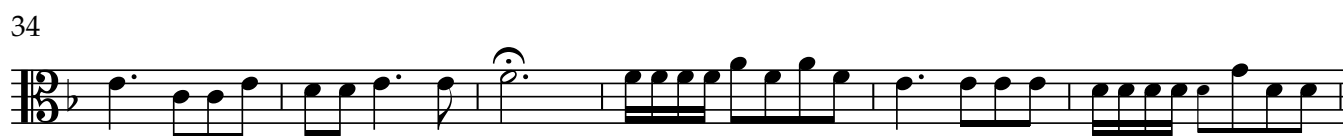


42. Gigue.



[SUITE N° 8 in g minor]

43. Sonata.



53



57



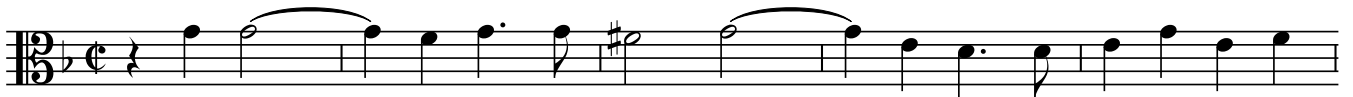
63



69

*Piano.*

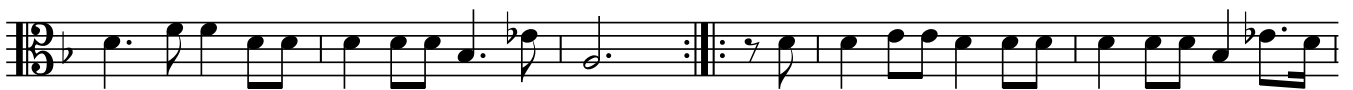
75

Adagio.

80

**44. Allemanda.**

5



10



45. Courant.



4



8



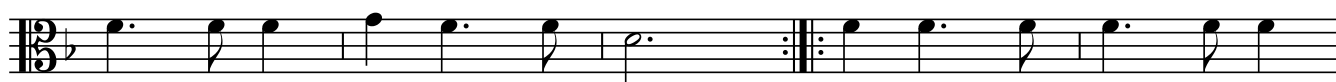
12



46. Sarabande.



6



11



47. Gavotte.



6



10



48. Gigue.



8



15



32



39



[SUITE N° 9 in c minor]

49. Sonata.

Adagio.

*Piano.*

48



54

Adagio.



50. Allemanda.



4



9



13



17



51. Courant.



5



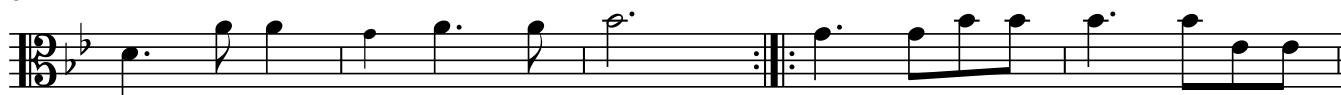
13



52. Sarabande.



6



11



53. Gavotte.

17



21



25



54. Gigue.

9



17



25



34



42

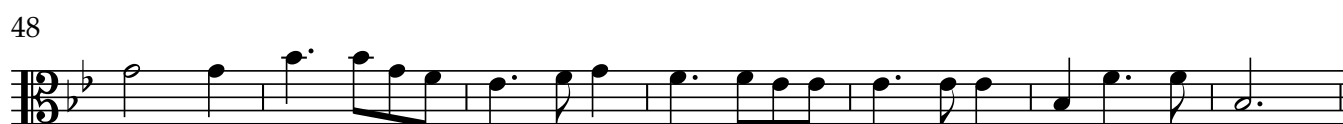


49



[SUITE N° 10 in Eb major]

55. Sonata.



55

Adagio.



61



66



71



75



56. Allemanda.



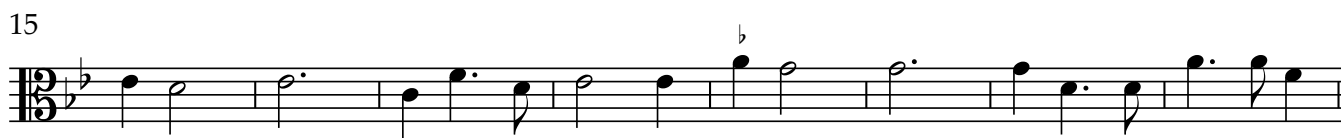
5



14



57. Courant.



58. Sarabande.



59. Gavotte.



59. Gavotte. Musical score for measures 1 through 9. The key signature is one flat (B-flat), and the time signature is common time (C). The notation is for a single staff. Measure 1 starts with a repeat sign. Measure 9 ends with a repeat sign.

60. Gigue.



60. Gigue. Musical score for measures 1 through 50. The key signature is one flat (B-flat), and the time signature is 3/8. The notation is for a single staff. Measure 1 starts with a repeat sign. Measure 9 ends with a repeat sign. Measure 17 starts with a repeat sign. Measure 25 ends with a repeat sign. Measure 33 starts with a repeat sign. Measure 42 ends with a repeat sign. Measure 50 ends with a repeat sign.